

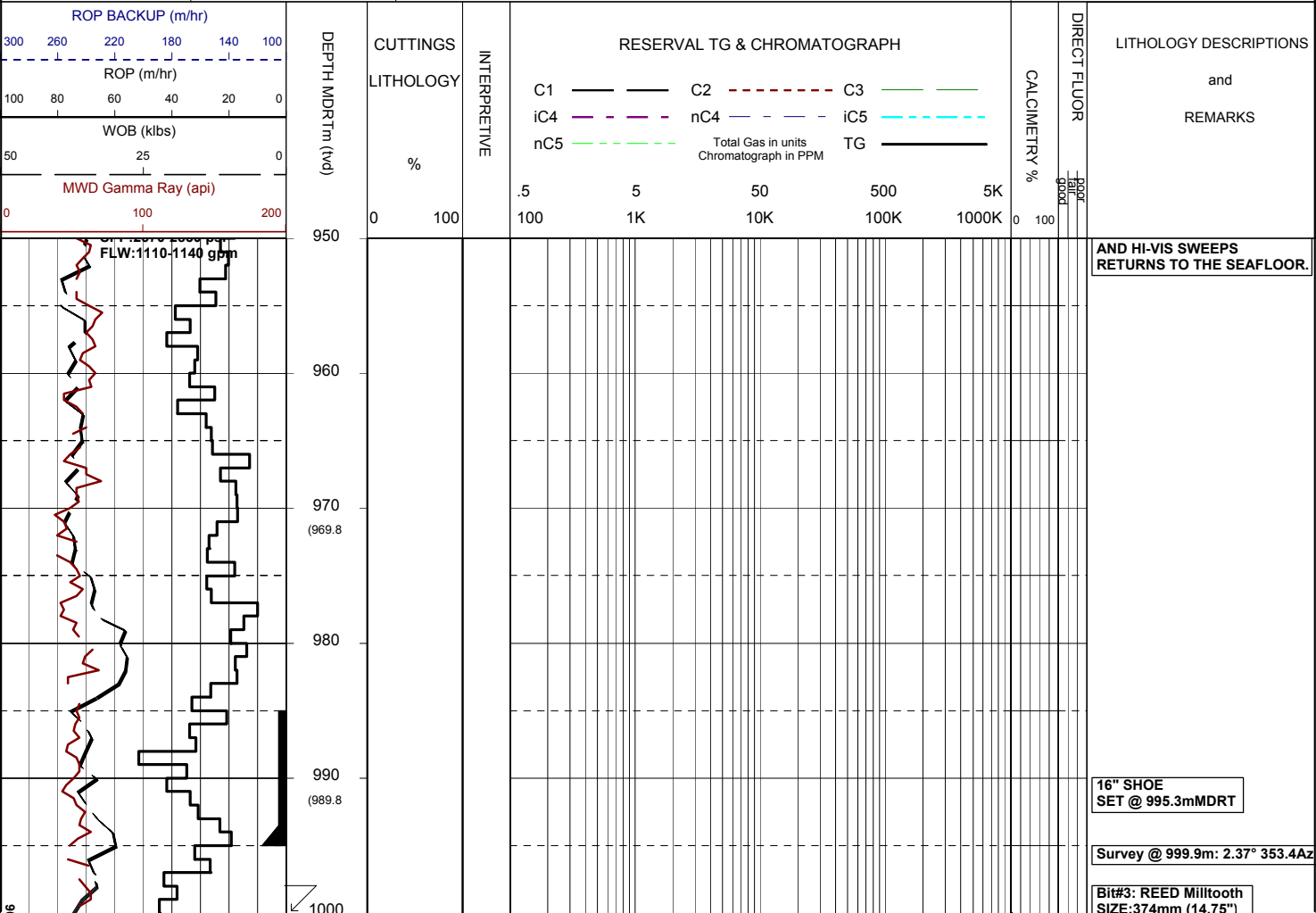


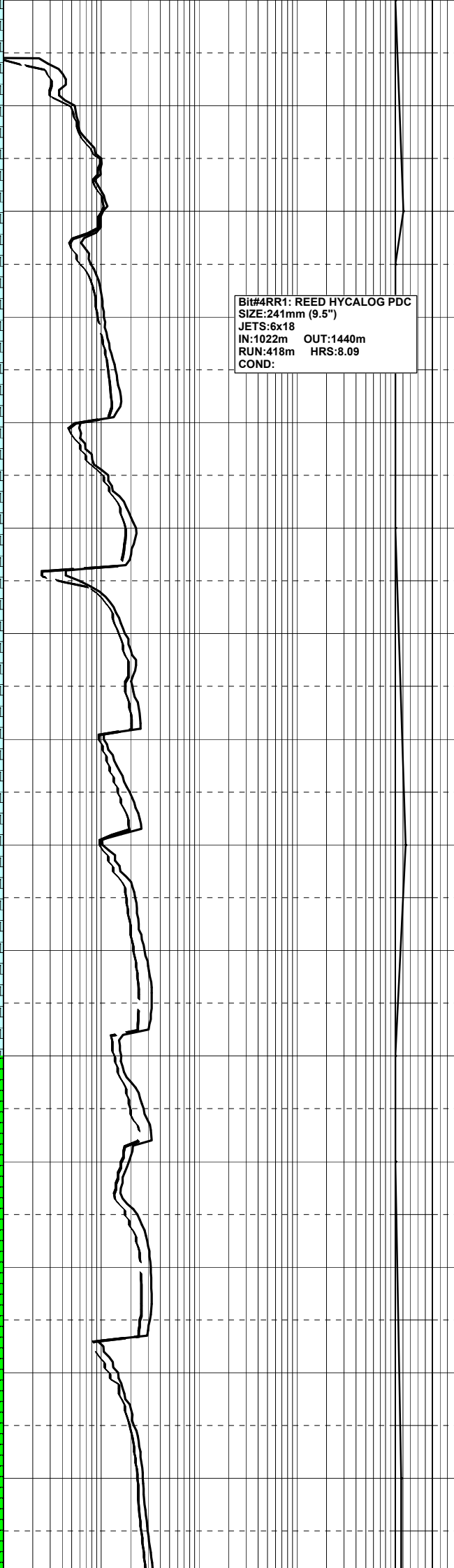
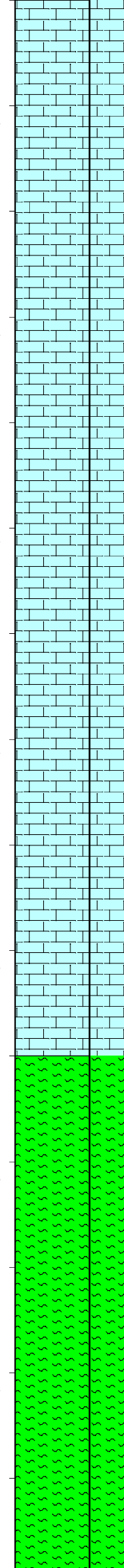
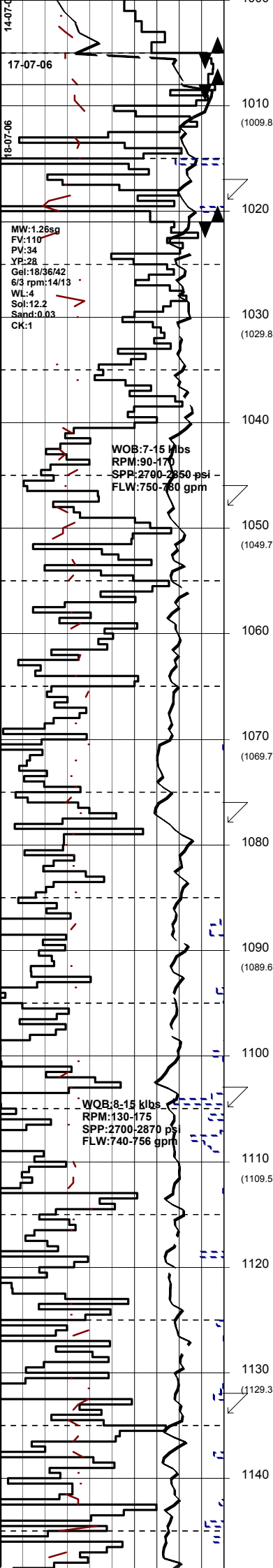
# MASTERLOG LONGTOM-3



GENERAL	POSITION	HOLE / CASING INFO	DATE / DEPTH	ENGINEERS
Country : AUSTRALIA	Latitude : 38°05'34.774"S	914mm(36") hole to: 112.0m	Spud Date : 11-07-2006	T. N. KYAW
Permit : VIC/P54	Longitude : 148°18'41.479"E	559mm(22") hole to: 1005m	Total Depth Date : XX-09-2006	F. MAKHAD
Field : LONGTOM	UTM Co-ord X (m E): 615005	241mm(9 1/2") hole to: m	Total Depth (mMDRT): m	A. DUNN
Basin : GIPPSLAND	UTM Co-ord Y (m N): 5783055	762mm(30") Cond. to: 110.8m	True Vertical Depth (mTVDSS): m	D. ADDERLEY
Well Type : APPRAISAL	RT to MSL (m): 21.5	406mm(16") Csg. to: 995.3m	Log Scale : 1/ 500	
Rig: OCEAN PATRIOT	RT to Sea Bed (m): 78.2		Final Status : ?	

ABBREVIATIONS	LITHOLOGY LEGEND	ENGINEERING LEGEND
MW Mud Weight FV Funnel Viscosity PV Plastic Viscosity YP Yield Point Gel Gel Strength WL Water Loss KCl Potassium Chloride Cl Chlorides Incl Inclination Az Azimuth	WOB Weight on Bit (klbs) RPM Rotations Per Min FLW Flow Rate (gpm) SPP Pump Pressure (psi) RR Re-Run Bit TG Trip Gas CG Connection Gas BG Background Gas DGP Drilled Gas Peak MM Mud Motor	Shoe Deviation survey DST TEST Test Sidewall Core Core
Claystone Siltstone Shale Fine SST Medium SST Coarse SST	Mari Clay, Limestone Limestone Dolomite Coal Arg. SST	DOLOMITE RFT FIT Mud loss Mud gain
	Lithic Fragment Foraminifera Fossils Bryozoa Sponges Brachiopoda	
	Cement Glauconite Pyrite Iron Minerals Mica Carb Fragments	





JETS: 3x20  
IN: 1005m OUT: 1008m  
RUN: 3m HRS: 0.45  
COND:

LOT @ 995m, EMW: 13.5ppg

Bit#4: REED HYCALOG PDC  
SIZE: 241mm (9.5")  
JETS: 6x18  
IN: 1008m OUT: 1022m  
RUN: 14m HRS: 2.08  
COND:

DISPLACE HOLE WITH SBM  
: PETROFREE

ARGILLACEOUS CALCILUTITE:  
It-med brnsh gry, lt olv gry  
-lt grnsh gry, aren i/p, tr pyr,  
tr carb spks, sft frm, amorph  
-sbbkly.

ARGILLACEOUS CALCILUTITE:  
It-med off wh-gry, lt olv gry-lt  
grnsh gry, aren i/p, sft frm,  
amorph-sbbkly.

Survey @ 1047.0m: 1.01° 290.3A

ARGILLACEOUS CALCILUTITE:  
It-med off wh-gry, lt olv gry-lt  
grnsh gry, aren i/p, frm-sft,  
bkly-sbfiss, tr amorph.

Survey @ 1077.0m: 6.03° 203.5A

ARGILLACEOUS CALCILUTITE:  
It-med gry-off wh, lt olv gry-lt  
grnsh gry, aren i/p, frm-sft,  
bkly-sbbkly, tr amorph.

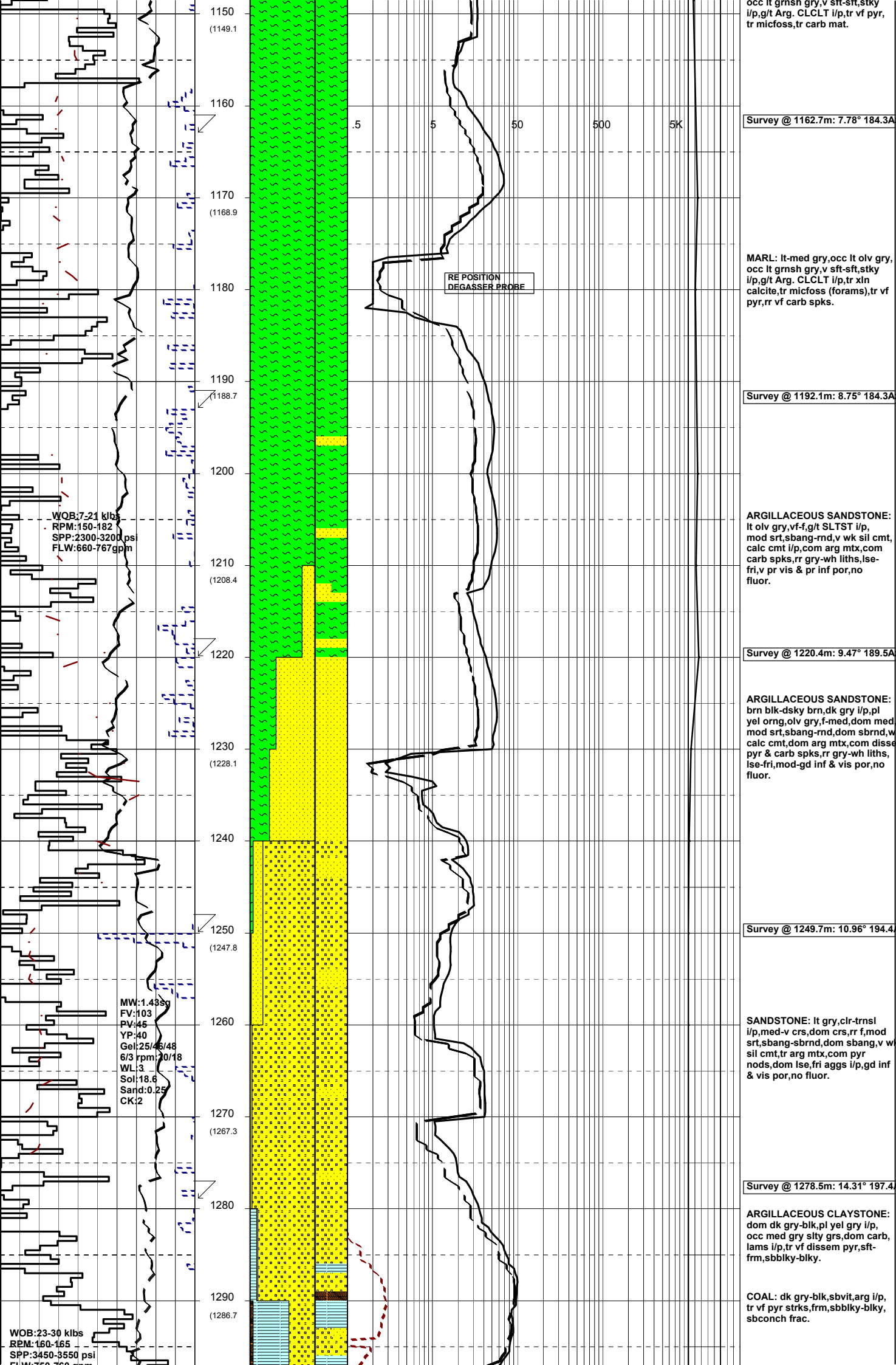
Survey @ 1105.8m: 7.59° 191.5A

MARL: It-med gry, occ lt olv gry-  
occ lt grnsh gry, v sft-sft, stky  
i/p, g/t Arg. CLCLT i/p, tr vf pyr,  
tr microfss, tr carb mat.

Survey @ 1134.2m: 8.42° 183.6A

MARL: It-med gry, occ lt olv gry-

Bit#4RR1: REED HYCALOG PDC  
SIZE: 241mm (9.5")  
JETS: 6x18  
IN: 1022m OUT: 1440m  
RUN: 418m HRS: 8.09  
COND:



occ lt grnsh gry, v srt-srt, stky i/p, g/t Arg. CLCLT i/p, tr vf pyr, tr micfoss, tr carb mat.

Survey @ 1162.7m: 7.78° 184.3A

MARL: lt-med gry, occ lt olv gry, occ lt grnsh gry, v sft-sft, stky i/p, g/t Arg. CLCLT i/p, tr xln calcite, tr micfoss (forams), tr vf pyr, rr vf carb spks.

Survey @ 1192.1m: 8.75° 184.3A

ARGILLACEOUS SANDSTONE: lt olv gry, vf-f, g/t SLTST i/p, mod srt, sbang-rnd, v wk sil cmt, calc cmt i/p, com arg mtx, com carb spks, rr gry-wh liths, lse-fri, v pr vis & pr inf por, no fluor.

Survey @ 1220.4m: 9.47° 189.5A

ARGILLACEOUS SANDSTONE: brn blk-dsky brn, dk gry i/p, pl vlt orng, olv gry, f-med, dom mod srt, sbang-rnd, dom sband, w calc cmt, dom arg mtx, com disse pyr & carb spks, rr gry-wh liths, lse-fri, mod-gd inf & vis por, no fluor.

Survey @ 1249.7m: 10.96° 194.4

SANDSTONE: lt gry, clr-trnsl i/p, med-v crs, dom crs, rr f, mod srt, sbang-sbrnd, dom sbang, v wk sil cmt, tr arg mtx, com pyr nods, dom lse, fri aggs i/p, gd inf & vis por, no fluor.

Survey @ 1278.5m: 14.31° 197.4

ARGILLACEOUS CLAYSTONE: dom dk gry-blk, pl yel gry i/p, occ med gry slty grs, dom carb, lams i/p, tr vf disse pyr, sft-frn, sbblky-blky.

COAL: dk gry-blk, sbvit, arg i/p, tr vf pyr strks, frm, sbblky-blky, sbconch frac.

WOB: 7-21 klbs  
RPM: 150-182  
SPP: 2300-3200 psi  
FLW: 660-767 gpm

MW: 1.43 sg  
FV: 103  
PV: 46  
YP: 40  
Gel: 25/46/48  
6/3 rpm/20/18  
WL: 3  
Sol: 18.6  
Sand: 0.25  
CK: 2

WOB: 23-30 klbs  
RPM: 160-165  
SPP: 3450-3550 psi  
FLW: 370 gpm

RE POSITION  
DEGASSER PROBE

.5      5      50      500      5K

